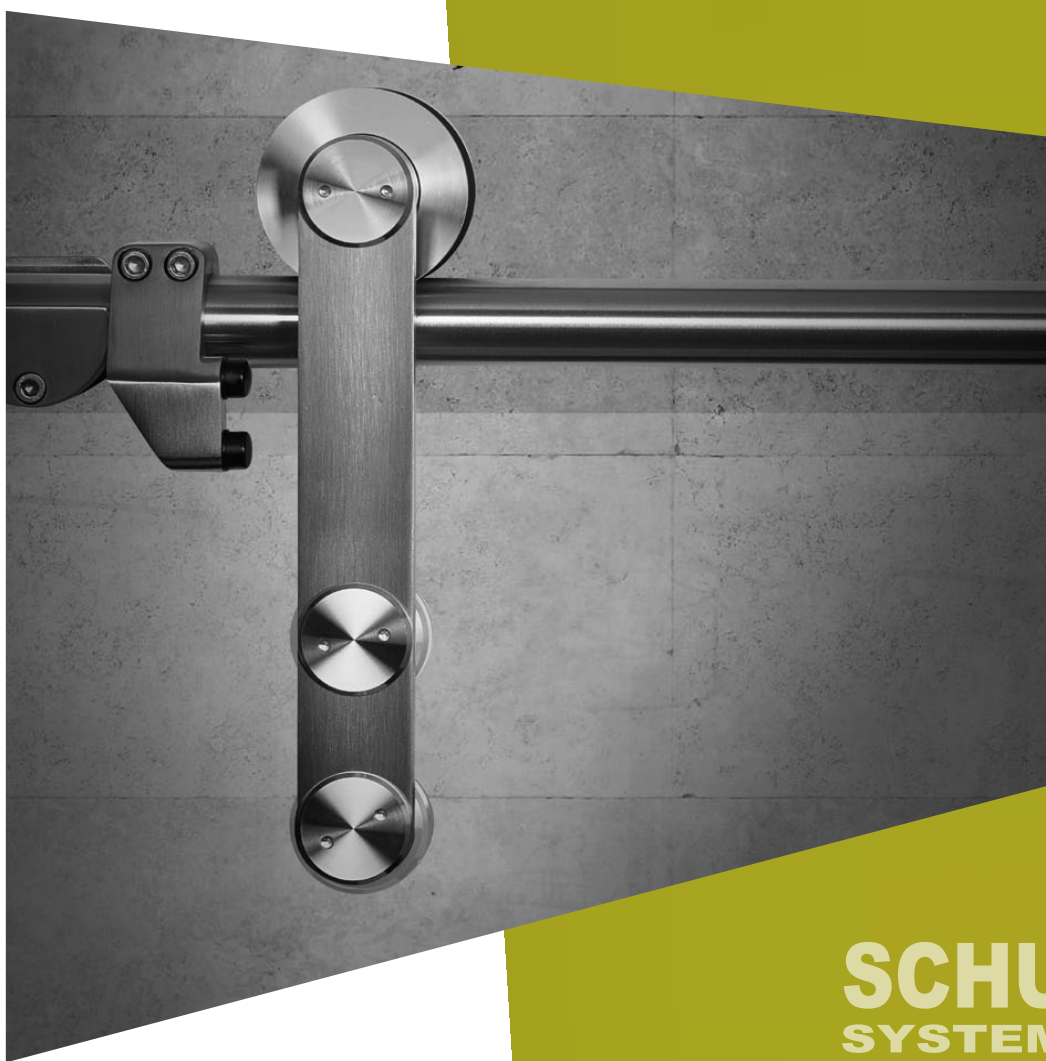


RAGUSA

**Schuifdeursystemen
Sliding systems**



**SCHUIF
SYSTEMEN**

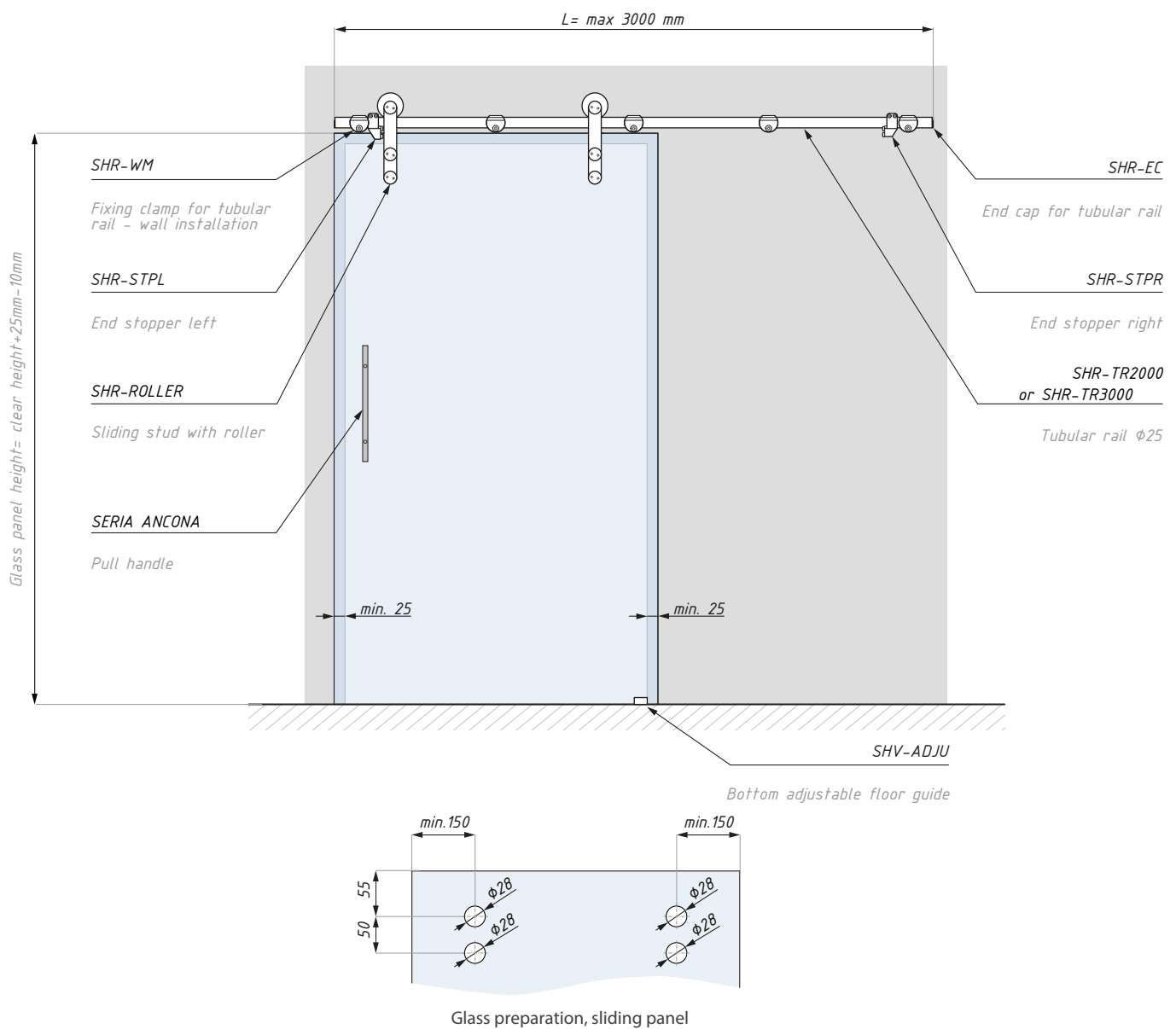
**SLIDING
SYSTEMS**

GLAS TECH
Solutions bv

ACCESSOIRES VOOR HARDGLAS



Set of accessories for wall installation, one sliding door



Code	Max lenght	Material	Finish	Glass thickness
SHR-WMSET2000SSS	2000	stainless steel	satın	8; 10; 12
SHR-WMSET3000SSS	3000	stainless steel	satın	8; 10; 12

0set's capacity (kg): 80

SHR SET 2000 Set includes:

Produkt	Pcs
SHR-ROLLER sliding stud with roller	2
SHR-STP end stopper right	1
SHR-STPL end stopper left	1
SHR-WM fixing clamp for tubular rail - wall installation	5
SHV-ADJU bottom adjustable floor guide	1
SHR-EC end cap for tubular rail	2
SHR-TR2000 tubular rail Ø25	1

SHR SET 3000 Set includes:

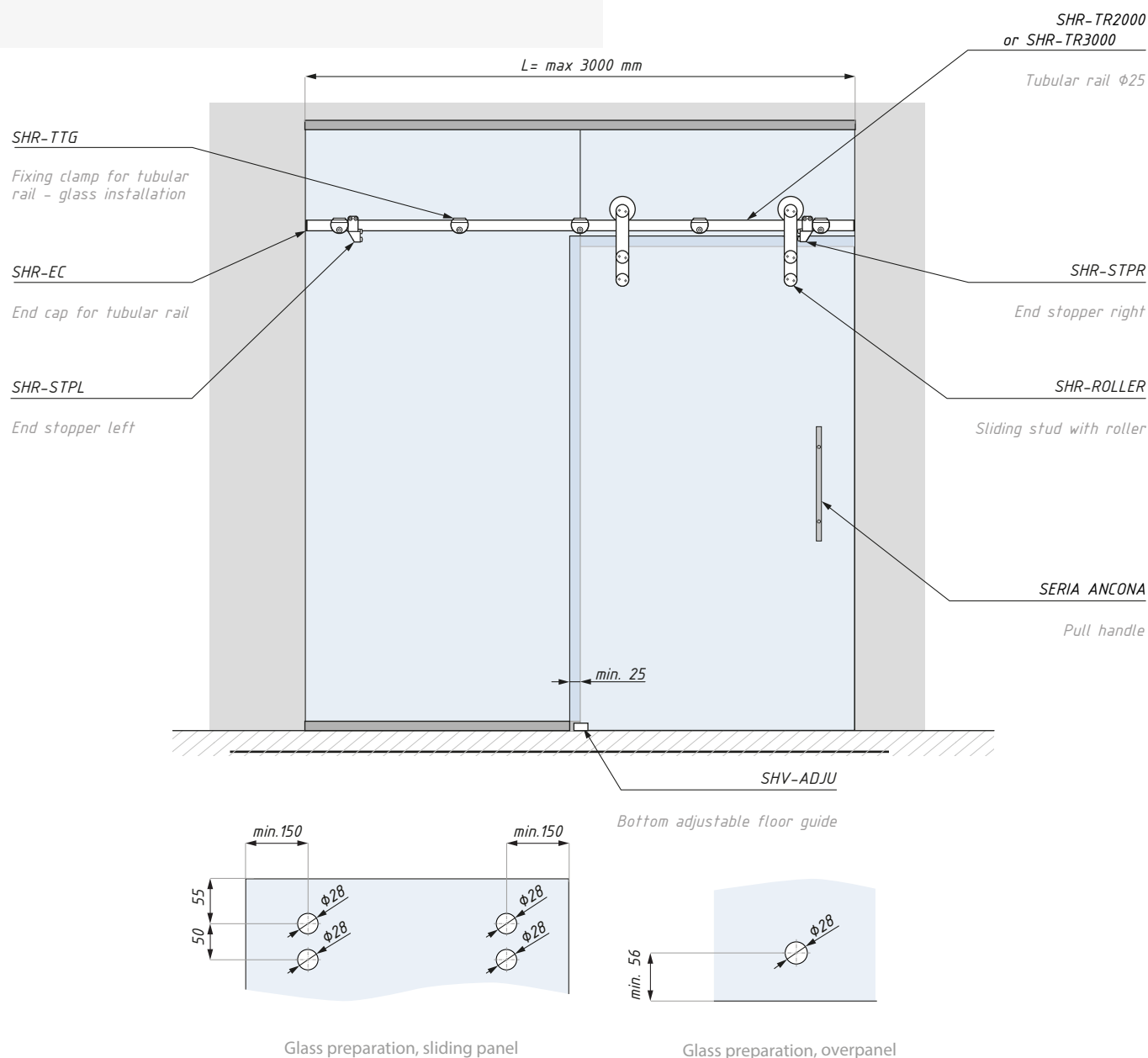
Produkt	Pcs
SHR-ROLLER sliding stud with roller	2
SHR-STPR end stopper right	1
SHR-STPL end stopper left	1
SHR-WM fixing clamp for tubular rail - wall installation	6
SHV-ADJU bottom adjustable floor guide	1
SHR-EC / end cap for tubular rail	2
SHR-TR3000 tubular rail Ø25	1

ATTENTION: Sets not include: pull handles.

SHR-TTGSET

Set of accessories for glass installation, one sliding door

GLAS TECH
Solutions b.v.



Code	Max lenght	Materiaal	Finish	Glass thickness
SHR-TTGSET2000SSS	2000	stainless steel	satijn	8; 10; 12
SHR-TTGSET3000SSS	3000	stainless steel	satijn	8; 10; 12

set's capacity (kg): 80

SHR-TTGSET2000

Set includes:

Produkt	Pcs
SHR-ROLLER sliding stud with roller	2
SHR-STPR end stopper right	1
SHR-STPL end stopper left	1
SHR-TTG fixing clamp for tubular rail - glass installation	5
SHV-ADJU bottom adjustable floor guide	1
SHR-EC end cap for tubular rail	2
SHR-TR2000 tubular rail $\phi 25$	1

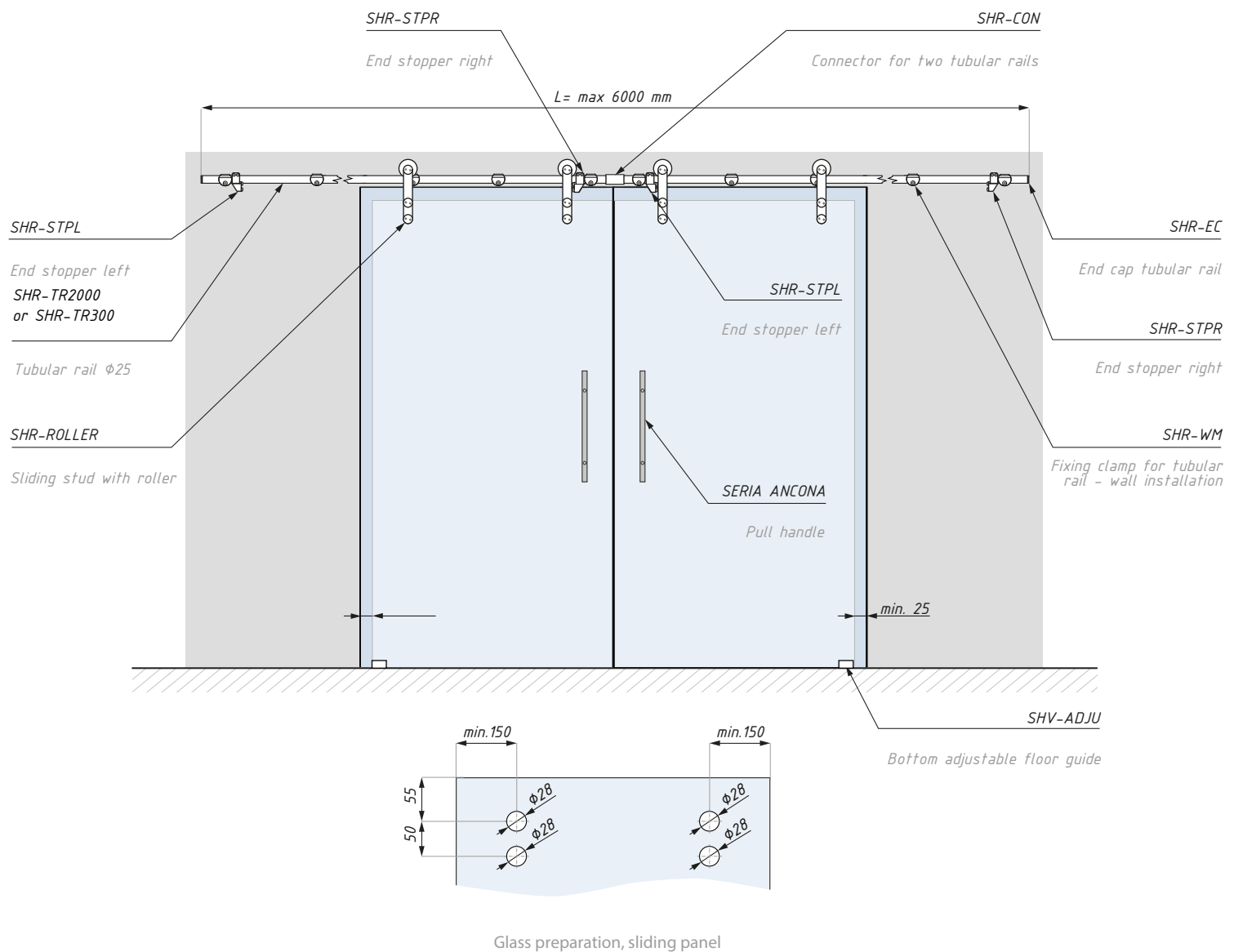
SHR-TTGSET3000

Set includes:

Produkt	Pcs
SHR-ROLLER sliding stud with roller	2
SHR-STPR end stopper right	1
SHR-STPL end stopper left	1
SHR-TTG fixing clamp for tubular rail - glass installation	6
SHV-ADJU bottom adjustable floor guide	1
SHR-EC end cap for tubular rail	2
SHR-TR3000 tubular rail $\phi 25$	1

ATTENTION: Sets not include: pull handles.

Set of accessories for wall installation, two sliding door



Code	Max lenght	Materiaal	Finish	Glass thickness
SHR-WM2SET4000SSS	4000	stainless steel	satin	8; 10; 12
SHR-WM2SET6000SSS	6000	stainless steel	satin	8; 10; 12

set's capacity (kg): 80 / sliding door

SHR-WM2SET4000

Set includes:

Produkt	Pcs
SHR-ROLLER sliding stud with roller	4
SHR-STPR end stopper right	2
SHR-STPL end stopper left	2
SHR-WM fixing clamp for tubular rail - wall installation	10
SHV-ADJU bottom adjustable floor guide	2
SHR-EC end cap for tubular rail	2
SHR-CON connector for two tubular rails	1
SHR-TR2000 tubular rail $\phi 25$	2

SHR-WM2SET6000

Set includes:

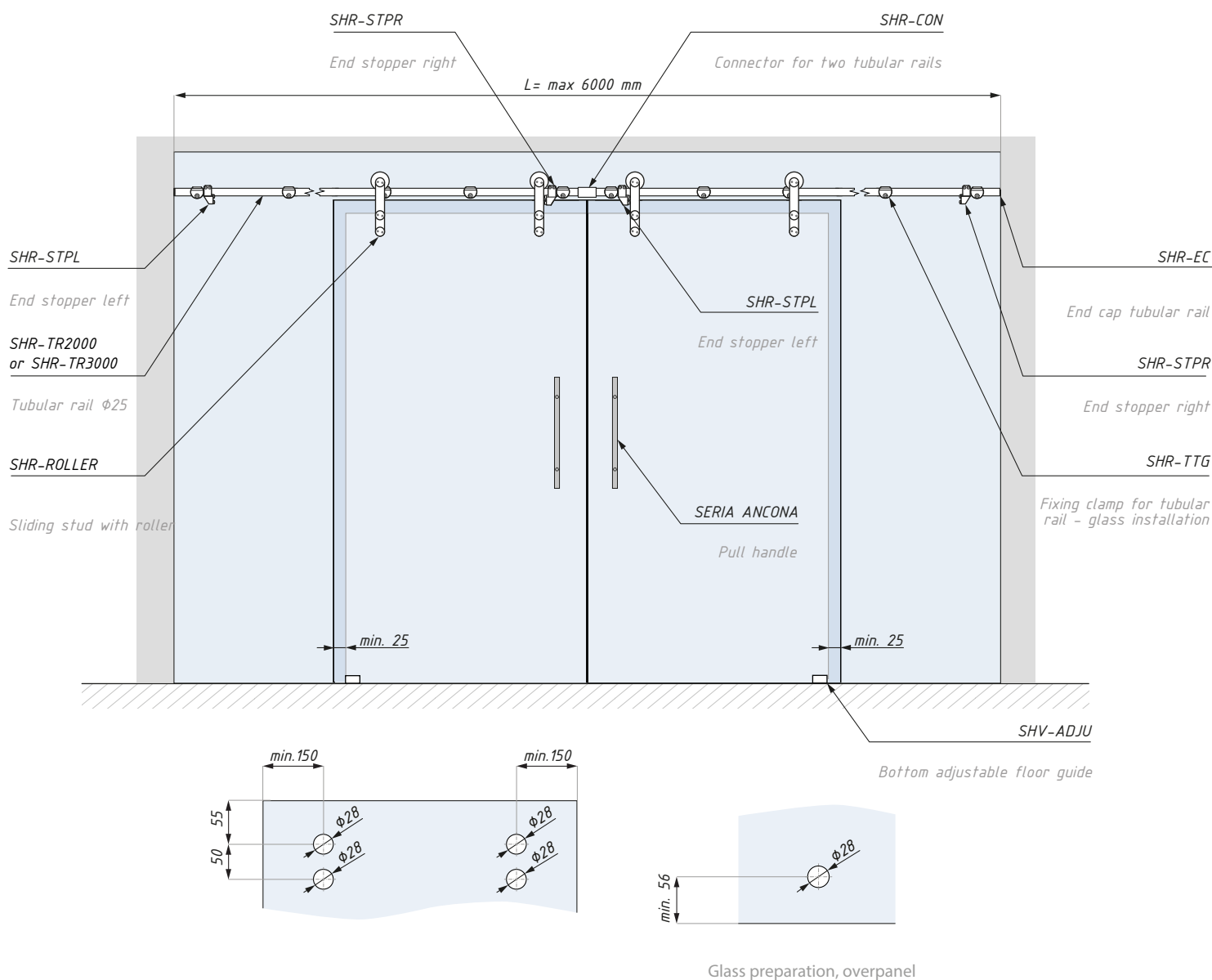
Produkt	Pcs
SHR-ROLLER sliding stud with roller	4
SHR-STPR end stopper right	2
SHR-STPL end stopper left	2
SHR-WM fixing clamp for tubular rail - wall installation	12
SHV-ADJU bottom adjustable floor guide	2
SHR-EC end cap for tubular rail	2
SHR-CON connector for two tubular rails	1
SHR-TR3000 tubular rail $\phi 25$	2

ATTENTION: Sets not include: handles.

SHR-TTG2SET

Set of accessories for glass installation, one sliding door

GLAS TECH
Solutions b.v.



Glass preparation, overpanel

Code	Max lenght	Material	Finish	Glass thickness
SHR-TTG2SET4000SSS	4000	stainless steel	satin	8; 10; 12
SHR-TTG2SET6000SSS	6000	stainless steel	satin	8; 10; 12

set's capacity (kg): 80 / sliding door

SHR-TTG2SET4000

Set includes:

Produkt	Pcs
SHR-ROLLER sliding stud with roller	4
SHR-STPR end stopper right	2
SHR-STPL end stopper left	2
SHR-TTG fixing clamp for tubular rail - glass installation	10
SHV-ADJU bottom adjustable floor guide	2
SHR-EC end cap for tubular rail	2
SHR-CON connector for two tubular rails	1
SHR-TR2000 tubular rail Ø25	2

SHR-TTG2SET6000

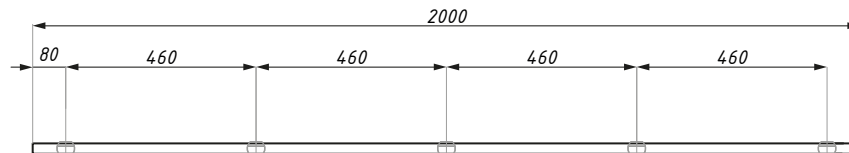
Set includes:

Produkt	Pcs
SHR-ROLLER sliding stud with roller	4
SHR-STPR end stopper right	2
SHR-STPL stopper left	2
SHR-TTG fixing clamp for tubular rail - glass installation	12
SHV-ADJU bottom adjustable floor guide	2
SHR-EC end cap for tubular rail	2
SHR-CON connector for two tubular rails	1
SHR-TR3000 tubular rail Ø25	2

ATTENTION: Sets not include: handles.
The tubular rails should be shorten simitrically.

SHR-TR2000

Tubular rail ø25

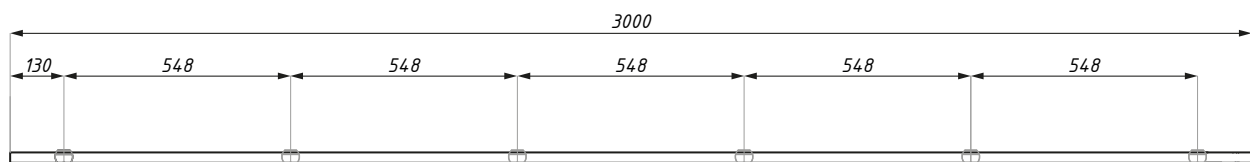


ATTENTION: Suggested position of the fixing clamps SHR-WM (wall installation) or SHR-TTG (glass installation) for tubular rail.

Code	Materiaal	Finish
SHR-TR2000SSS	stainless steel	satin

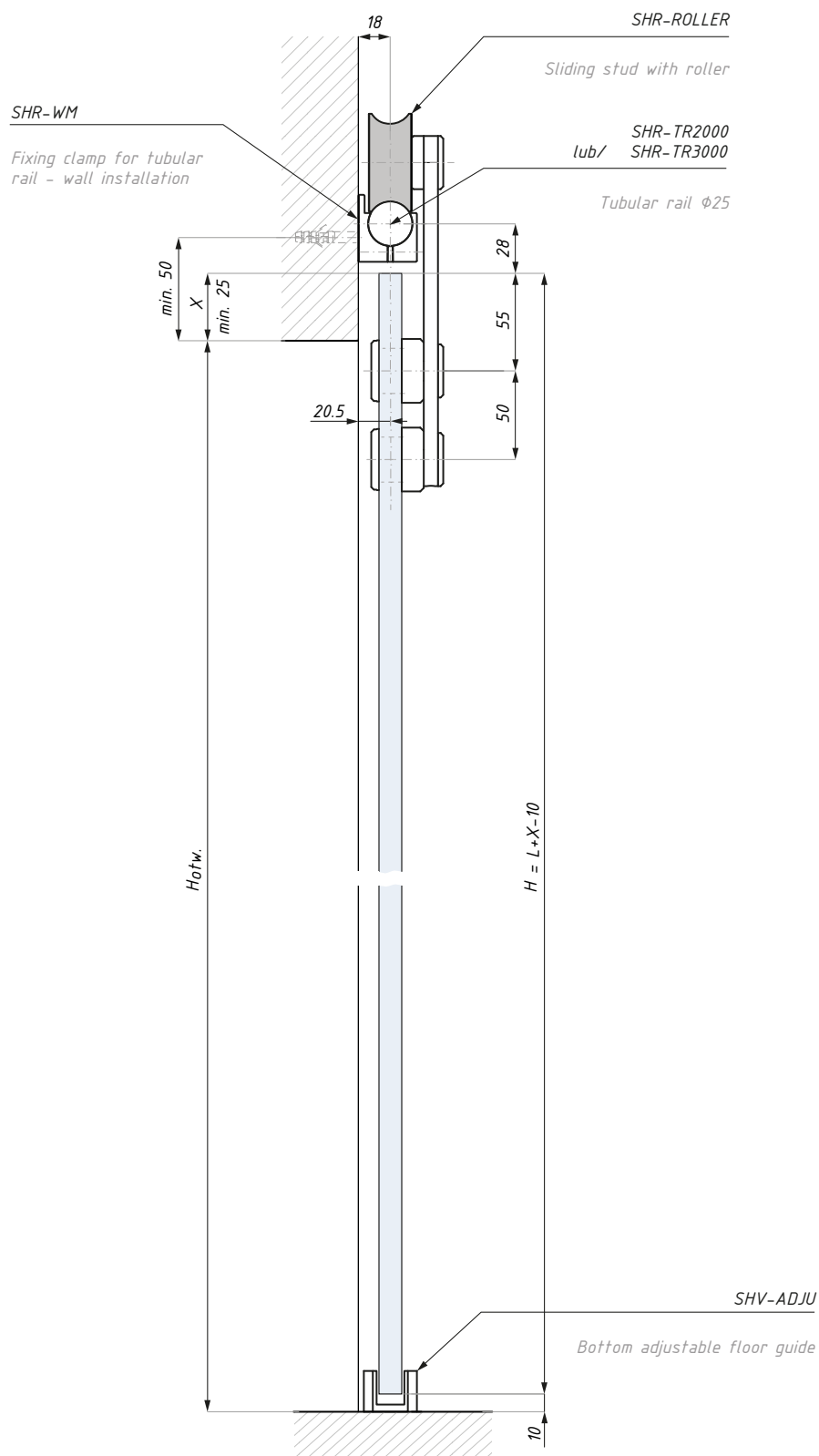
SHR-TR30

Tubular rail ø25

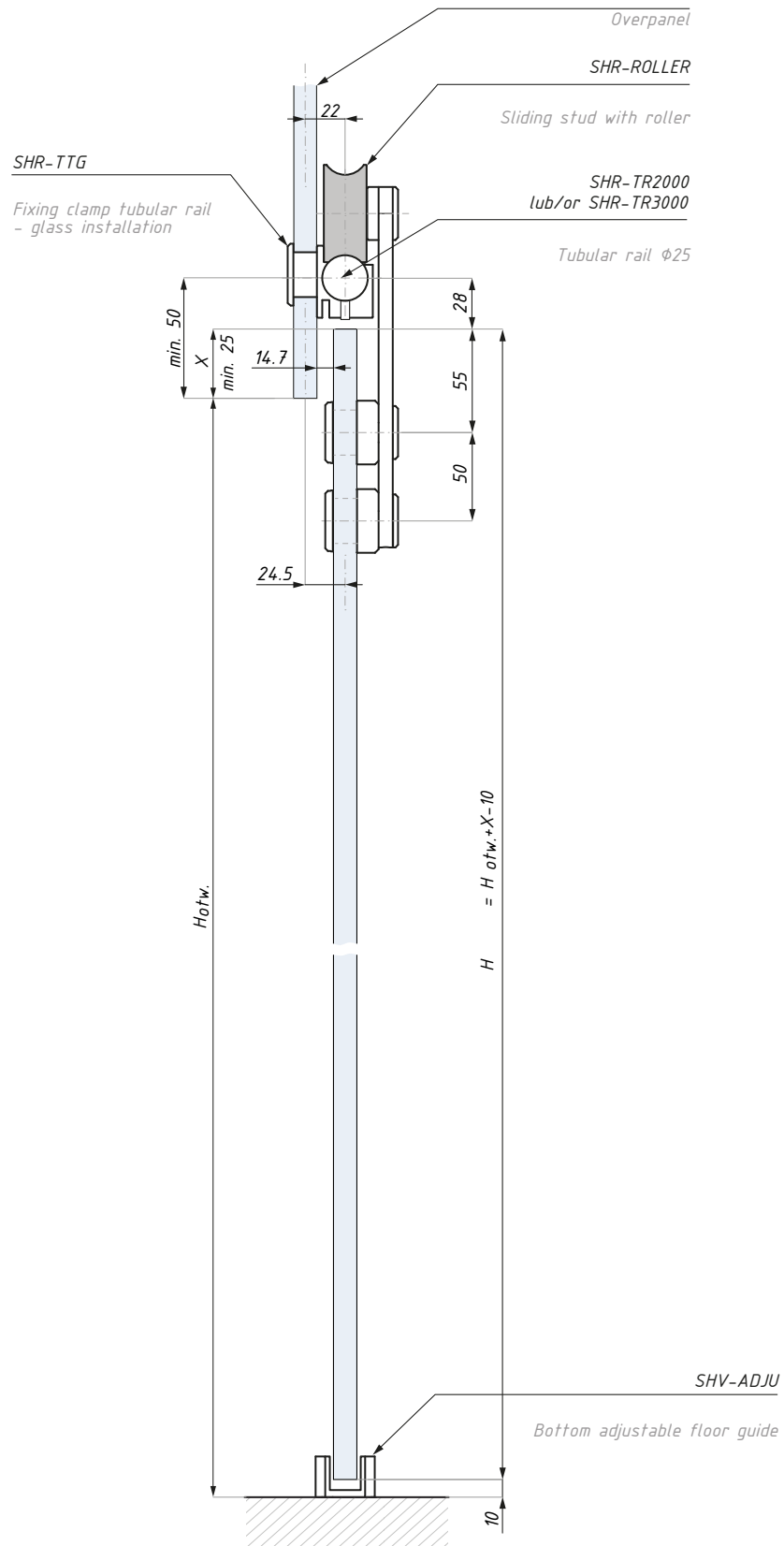


ATTENTION: Suggested position of the fixing clamps SHR-WM (wall installation) or SHR-TTG (glass installation) for tubular rail.

Code	Materiaal	Finish
SHR-TR3000SSS	stainless steel	satin

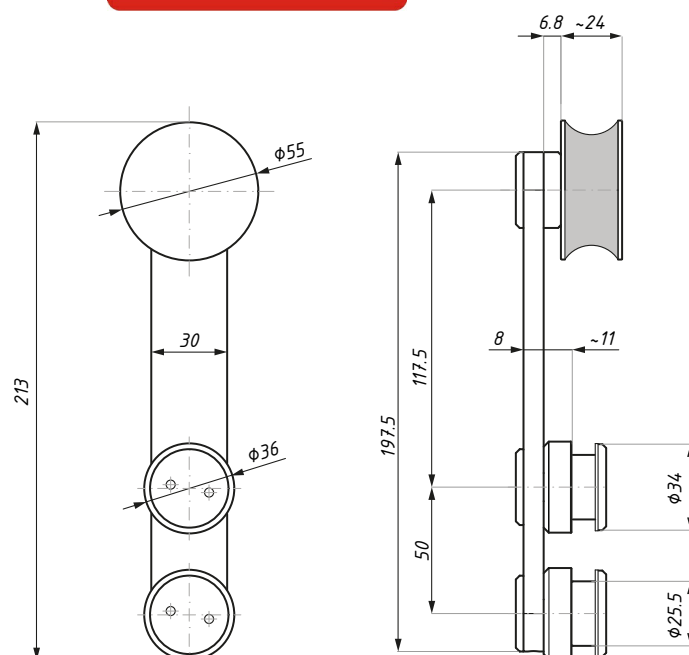


Wall installation



SHR-ROLLER

Sliding stud with roller

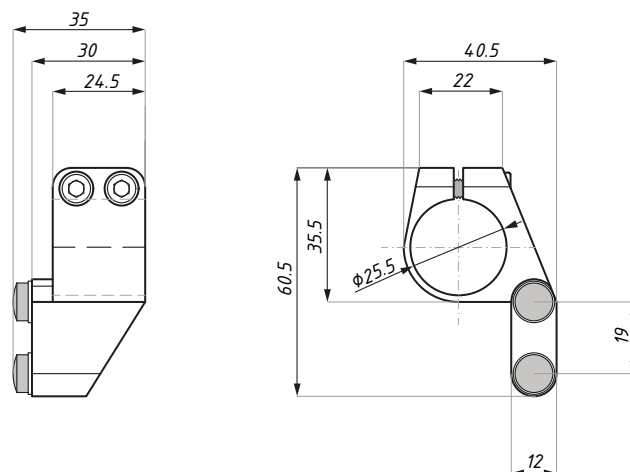


Code	Materiaal	Finish
SHR-ROLLER SSS	stainless steel	satin

glass thickness (mm): 8; 10; 12

SHR-STPR

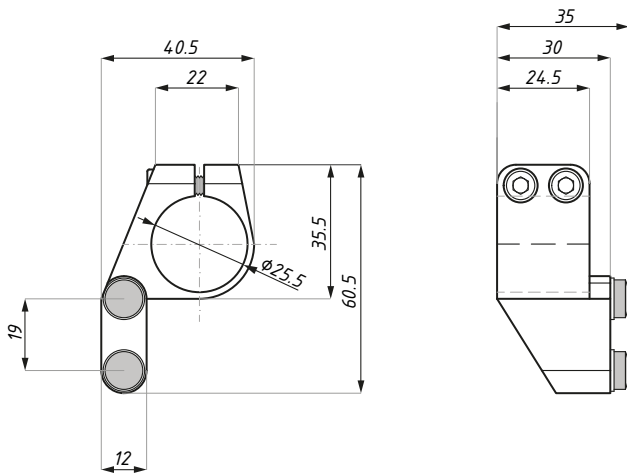
End stopper right



Code	Materiaal	Finish
SHR-STPR SSS	stainless steel	satin

SHR-STPL

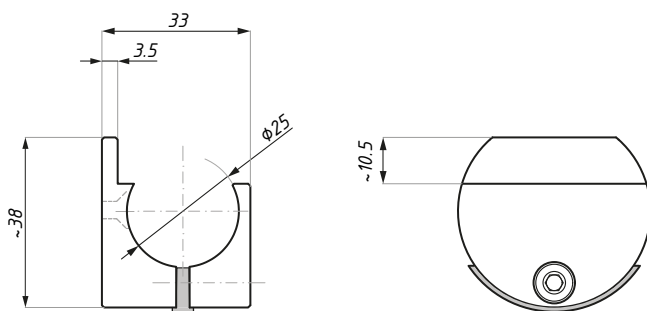
End stopper left



Code	Materiaal	Finish
SHR-STPL SSS	stainless steel	ssatin

SHR-WM

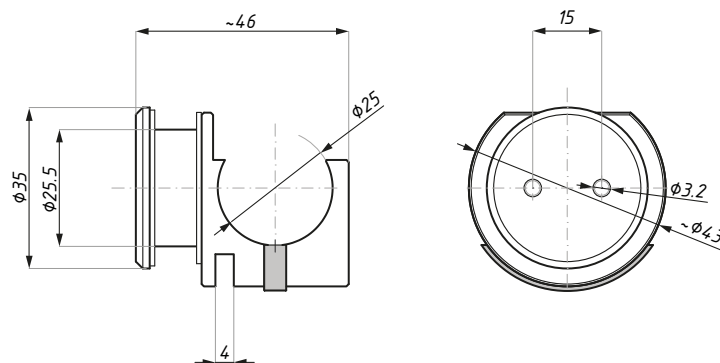
Fixing clamp for tubular rail – wall installation



Code	Materiaal	Finish
SHR-WM SSS	stainless steel	ssatin

SHR-TTG

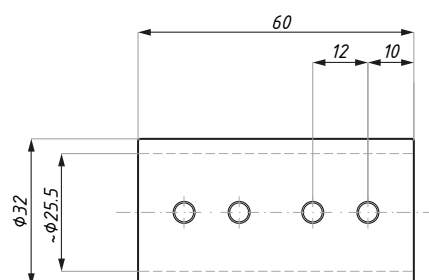
Fixing clamp for tubular rail – glass installation



Code	Materiaal	Finish
SHR-TTG SSS	stainless steel	satin

SHR-CON

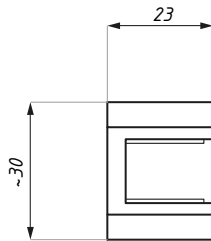
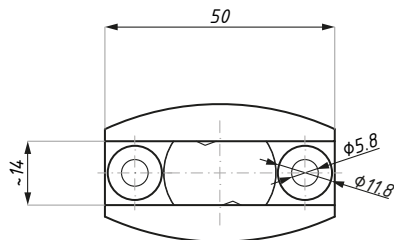
Connector for two tubular rails



Code	Materiaal	Finish
SHR-CON SSS	stainless steel	satin

SHV-ADJU

Bottom adjustable floor guide

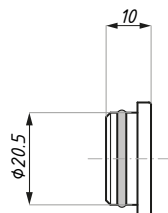
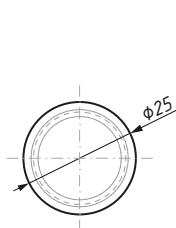


Code	Materiaal	Finish
SHR-ADJU SSS	stainless steel	ssatin

glass thickness (mm): 8; 10; 12

SHR-EC

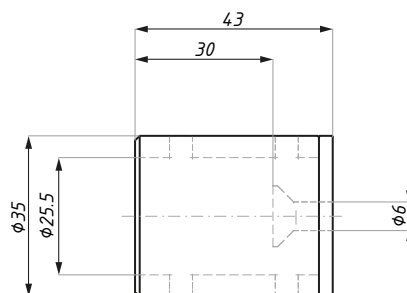
End cap for tubular rail



Code	Materiaal	Finish
SHR-EC SSS	stainless steel	ssatin

SHV-MSD

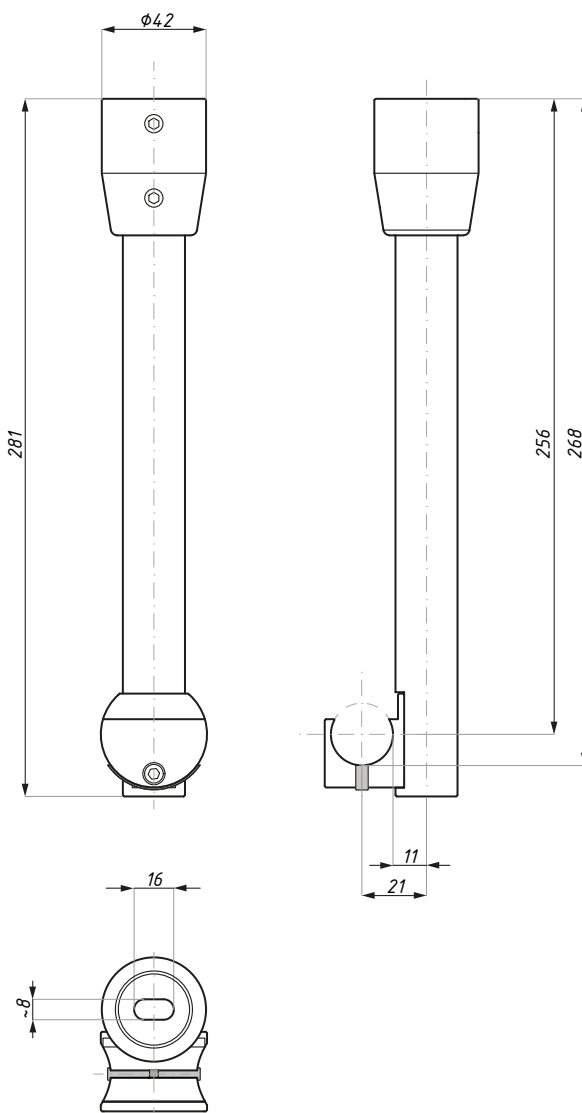
Side connector for tubular rail – wall installation



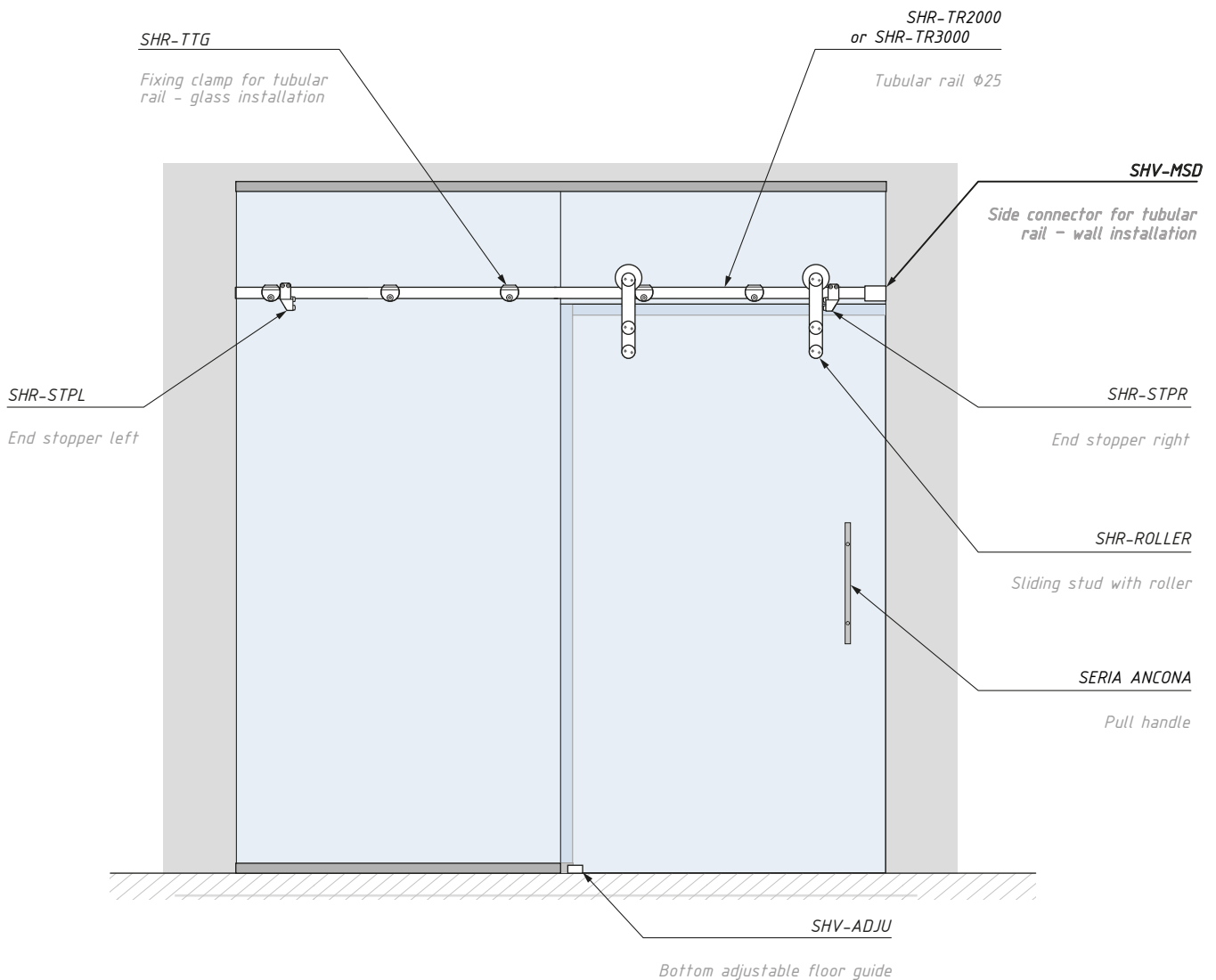
Code	Materiaal	Finish
SHV-MSD SSS	stainless steel	satin

SHR-CM

Ceiling retainer for tubular rail

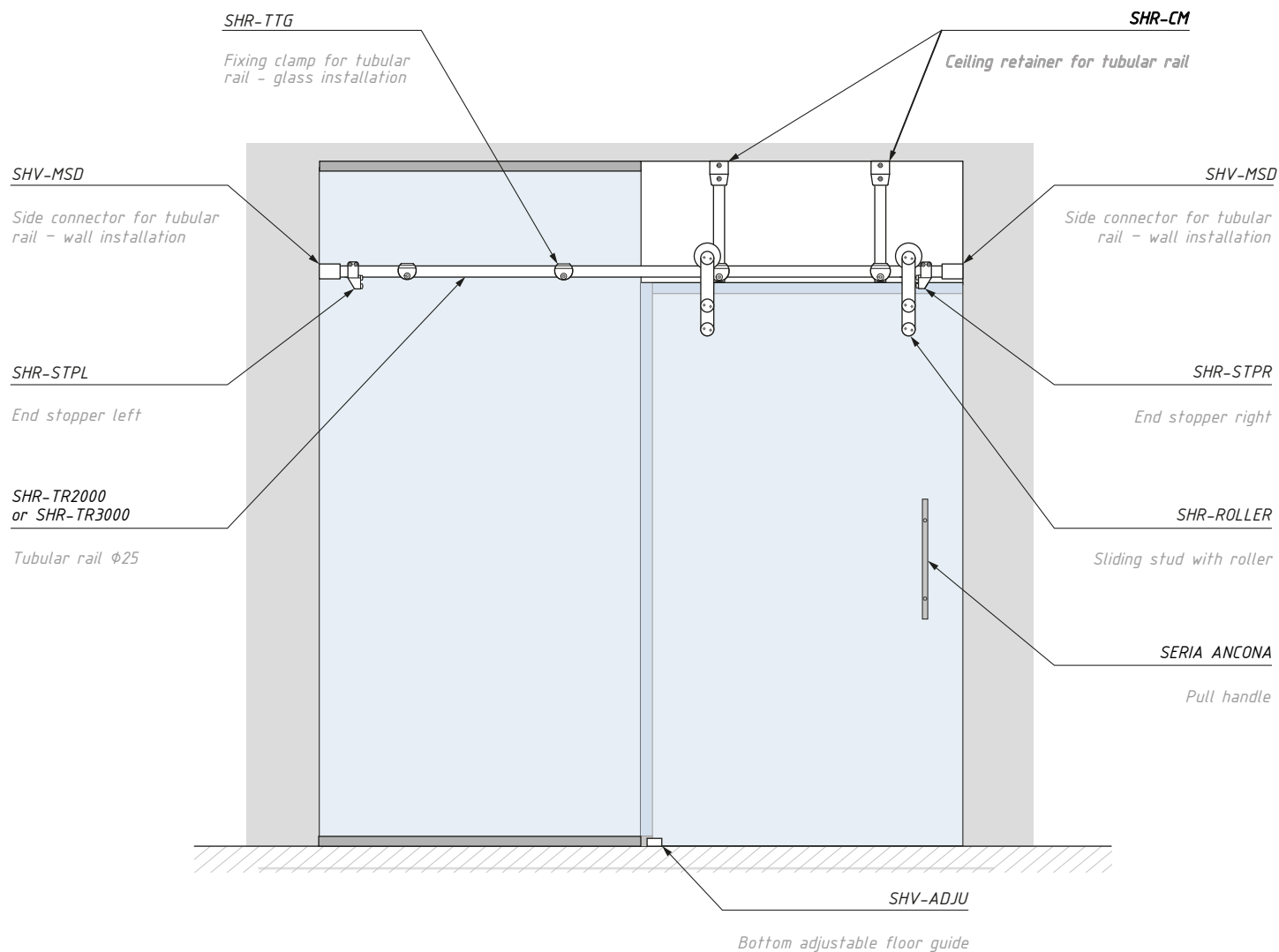


Code	Materiaal	Finish
SHR-CM SSS	stainless steel	satin



Example application of additional parts for particular installation - Side connector for tubular rail - wall installation

Ceiling installation



Example application of additional parts for particular installation - Ceiling retainer for tubular rail - ceiling installation





www.glastech.eu



GLASS HARDWARE Be Ne De Lux

Burgemeester van Meeuwenstraat 2
6191 ND Beek (LB)
The Netherlands

Tel: +31(0) 46 428 07 28
sales@glastech.eu

www.glastech.eu